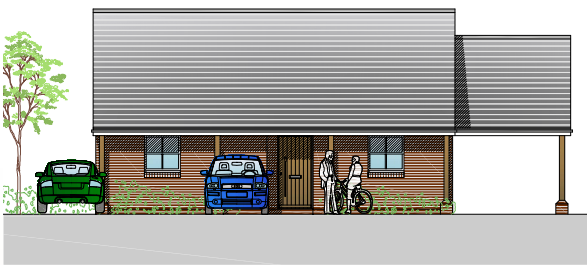




# THE NEW BUILD BUNGALOW

## PLOT 4

Selwood Place is a courtyard development featuring 7 two and three bedroom cottages & 1 two bed detached bungalow. The new build bungalow within the development is a highly appealing and well-planned bungalow for people seeking single-storey accommodation.



PLOT 4



ARTIST'S IMPRESSION - ARIEL VIEW

## FLOOR PLANS

### PLOT 4 2 BED BUNGALOW

#### Living / Dining Room

6.40m x 3.3m      20'9" x 10'8"

#### Kitchen

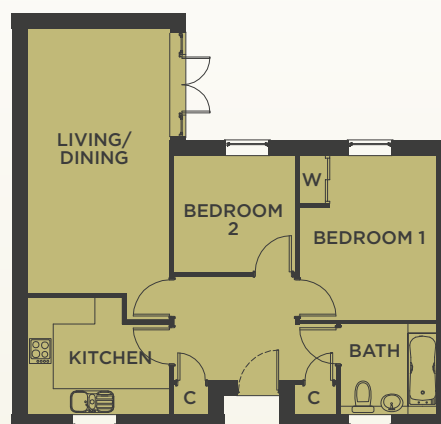
2.85m x 3.3m      9'3" x 10'8"

#### Bedroom 1

3.5m x 3.8m      11'4" x 12'4"

#### Bedroom 2

2.85m x 2.7m      9'3" x 8'8"



Final elevations may vary. The dimensions shown on the floor plans are approximate. Each home is built individually and so the precise measurements may vary from that shown although every endeavour is made to make the dimensions as accurate as possible. We give maximum dimensions that may include fitted wardrobes, sloping ceilings, bay windows and any other features.

# SPECIFICATION



Images are from previous First Wessex properties and are for illustrative purposes only.

## GENERAL FEATURES

- Gas central heating with 'Gloworm' Combination boiler
- Oak-veneer internal doors with chrome door furniture
- Walls painted white with pencil skirting throughout
- White-finish electric points
- External doors - Secured by Design
- uPVC glazed windows with feature astragal bars
- Spur for burglar alarm
- Wired for satellite

## KITCHEN

- Attractive fully-fitted kitchen by Howdens - 'Shaker style, Greenwich Ivory'
- Chrome finish 'T-bar' door furniture to cupboards
- 1 1/2 kitchen sink
- Co-ordinated oak-effect work top with upstands
- Integrated oven and hob
- Downlighter lighting
- Integrated washing machine, fridge/freezer and dishwasher
- Vinyl flooring

## BEDROOMS

- Fitted wardrobes to master bedroom
- Carpeted
- TV and phone points to bedroom 1

## LOUNGE AND DINING

- Open-plan lounge and dining area or kitchen/dining area
- TV and phone points
- Patio door leading to garden
- Carpet - to lounge/dining area
- Part-carpeted to dining/kitchen area

## BATHROOM

- White 'Kadewei' bathroom suite
- Over-shower bath with shower screen
- Fully tiled around bath area, part-tiled elsewhere
- 'Anatolia Mink Stone Effect' porcelain wall tiles to bathroom and cloakroom
- Chrome mixer taps
- Towel rail
- Vinyl flooring

## EXTERNAL

- Patio area to rear
- Rear turfed lawns
- Outside water tap
- Wooden shed
- Carport

# SITE PLAN



*MISREPRESENTATION ACT (1967): The particulars contained within this brochure have been prepared with due care and attention. They are believed to be correct, neither the acting agents or First Wessex guarantee their accuracy and these details are not intended to form part of any contract.*

*FINANCE ACT (1991): Unless otherwise stated, all prices quoted exclude V.A.T. and any intending purchaser or lessee, must satisfy themselves independently as to the incidence of V.A.T. in respect of any transaction.*

*PROPERTY MISDESCRIPTIONS ACT (1991): These details are believed to be correct at the time of compilation. First Wessex reserve the right to make variations as this may be required due to the nature of building works. All room dimensions are approximate and may vary.*

*First Wessex reserve the right to make variations in the tenure at any time. Interior images are of a typical First Wessex show apartment & are for illustrative purposes only. All royalty free stock photography and respective ownerships acknowledged.*

**paul jeffreys**

sales | lettings | land

## FOR MORE INFORMATION

Call 023 8084 8555

Email [sales@pauljeffreys.co.uk](mailto:sales@pauljeffreys.co.uk)

[www.pauljeffreys.co.uk](http://www.pauljeffreys.co.uk)

First Wessex